

# **ALLCLEAR**

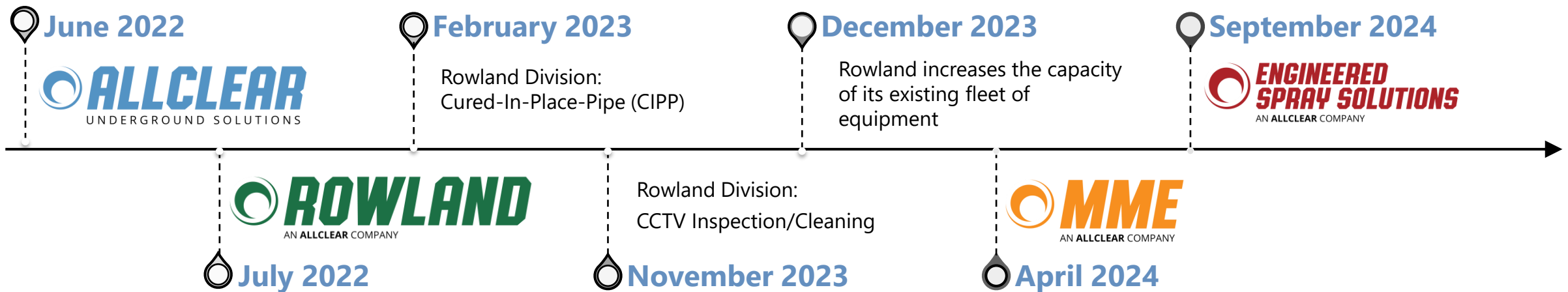
## UNDERGROUND SOLUTIONS

---



# ACUS Strategic Milestones: Building the Future of Underground Infrastructure

AllClear Underground Solutions (ACUS) is a one-of-a-kind company built to serve the full lifecycle of operations and maintenance challenges faced by owners of underground water and wastewater infrastructure. We believe in offering the most innovative and comprehensive suite of inflow and infiltration solutions in the marketplace. That's why we've merged the teams at long-standing and respected companies like MME, ESS, and Rowland into one unified brand capable of keeping this vital infrastructure flowing free and clean.



*Looking forward, AllClear remains committed to innovation and customer-focused solutions.*

# ACUS Self-Performed Utility Maintenance and Repair Services

## Services

### Open Cut/Point Repairs

- Open Cut
- Point Repair
- Water Meter Replacement

### Manhole/Structure Rehab Techniques

- Spray Rehabilitation - EpoxyTec
- Spray Rehabilitation - Spraywall
- Spray Rehabilitation – SewperCoat
- Manhole Releveling
- Grouting

### Trenchless Lining Techniques

- Trenchless Lining – CIPP (UV Cured)
- Trenchless Lining - Fold & Form
- Trenchless Lining - Spin Casting
- Trenchless Lining - Slip Lining

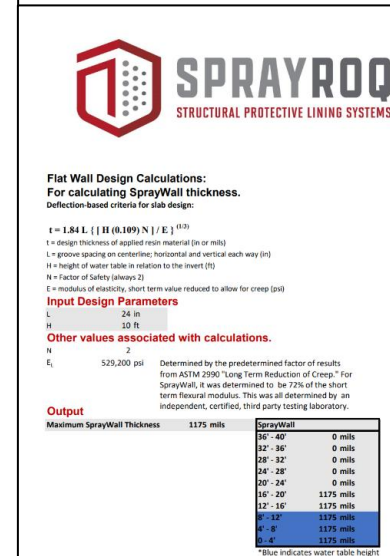
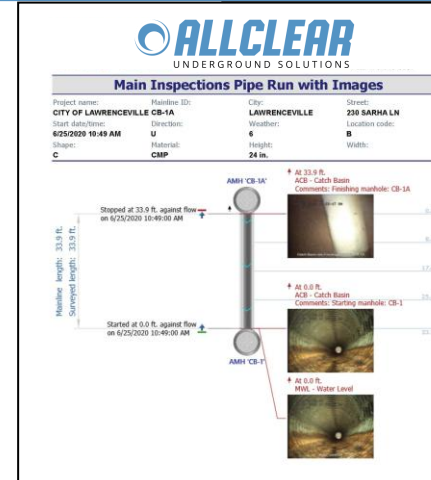
### CCTV Inspection and Cleaning

- CCTV Inspection and Cleaning - Storm
- CCTV Inspection and Cleaning -Sanitary

## Products

### InflowShield® Stainless Steel Manhole Insert

- InflowShield®





# Open Cut & Point Repair

Complete solutions for pipeline repairs, installations, rehabilitation, and construction support.

## Emergency & Repair Services

- Emergency & As-Needed Repair Services
- Point Repairs from 4" to 72"
- Fleet Capability to handle any Size Project

## Pipeline & Sewer Solutions

- By-Pass Installation with Telemetry
- Mainline Gravity Sewer Installation and Manhole Installation
- Experts with both Gravity Sewer and Pressure Pipe

## Construction & Infrastructure Support

- Road Restoration and Construction
- Traffic Control on major roads and arteries
- Sheeting and Shoring Specialist

## Specialized Installation & Replacement

- Water Meter Installation / Water Main Replacement
- Cleanout Installation

## Rehabilitation & Facility Upgrades

- Lift Station Repair and Rehabilitation, including complete demolition and repair
- Treatment Plant Repairs and Valve Installations
- Work in backyard easements, including areas with pools and other property



Trusted Experts in Open Cut, Point Repairs & Water Meter Installation  
Precision + Performance = Results

## Proudly Serving



# Manhole & Structure Rehabilitation: SprayWall Solutions

Advanced **SprayRoq** solutions for manhole and structure rehabilitation, featuring **SprayWall** to ensure durability, corrosion resistance, and long-term infrastructure integrity.

## SprayWall®: Advanced Structural Rehabilitation

- Restores structural integrity to deteriorated infrastructure.
- Provides superior corrosion resistance and infiltration control.

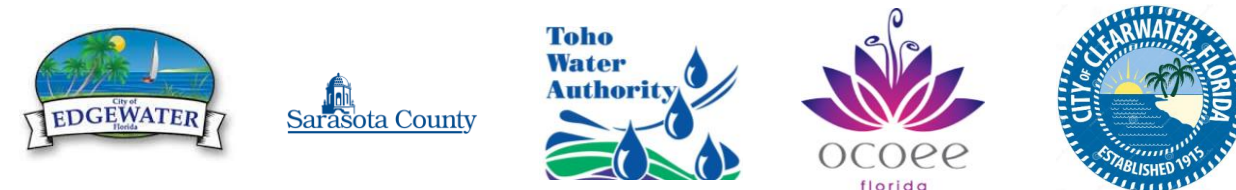
### Key Features:

- **Rapid Cure Time:** Begins curing in less than 30 seconds; structures can return to service within moments.
- **High Build Application:** Capable of achieving substantial thickness in a single application, ensuring durability.
- **Long-Term Performance:** Extends asset life by 40-50 years, adhering to a 50-year design protocol.
- **Environmentally Friendly:** 100% VOC-free formulations.
- Full compliance with safety certifications, including **confined space**, **H2S training**, **CPR**, **OSHA 10 & 30**, and **Maintenance of Traffic (M.O.T.)** certifications
- **Proven Performance:** Over 25 years of global use, restoring failing infrastructure to optimal operation.



AllClear is the **only Sprayroq Certified Partner** in the State of Florida, Georgia, and Tennessee

### Proudly Serving



### Key Applications Include:

Manholes  
Lift Stations/Wet Wells  
Water Treatment Facilities  
Large-Diameter Storm Sewer Pipes

### Certified Applicators of:

Spraywall®  
SprayShield® Green 2  
SR-6100 Trowel-On-Epoxy



# Manhole & Structure Rehabilitation: SewperCoat and Epoxytec Solutions

Advanced solutions for manhole and structure rehabilitation, featuring **Epoxytec** and **Sewpercoat** to ensure durability, corrosion resistance, and long-term infrastructure integrity.

## SEWPERCOAT®

**SewperCoat®:** Specially engineered calcium aluminate mortar designed for extreme H<sub>2</sub>S environments.

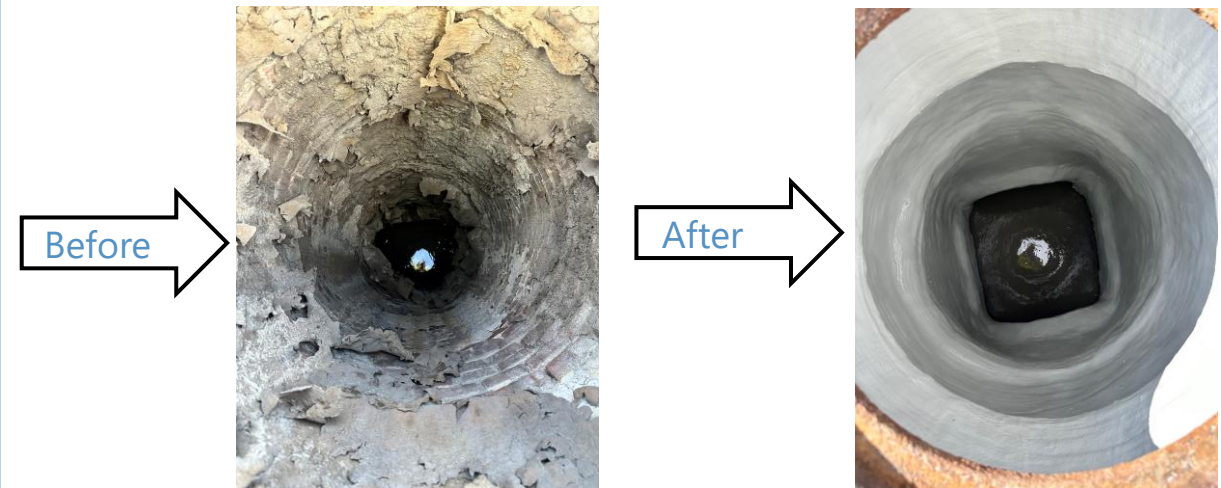
- Resistant to biogenic corrosion caused by hydrogen sulfide (H<sub>2</sub>S) in sewer environments.
- Restores structural integrity and prevents long-term degradation.
- Designed for systems exposed to aggressive conditions.
- Applied to Manholes, Wet Wells, Sewer Pipes, Lift Stations and Wastewater Treatment Facilities
- Meets or exceeds **ASTM standards** for structural performance and corrosion resistance.



## EPOXYTEC™

**Epoxytec®:** Advanced Epoxy Solutions for Infrastructure Rehabilitation

- Protective epoxy solutions for structural rehabilitation and corrosion resistance.
- Meets or exceeds **ASTM 2561, 1216, and 3240 standards** for quality and performance.
- Creates a seamless, waterproof barrier **to prevent infiltration and exfiltration.**
- Excellent chemical resistance to handle industrial and wastewater environments.
- **UV-stable** and ideal for water and wastewater infrastructure rehabilitation
- Can be spray-applied, troweled, or rolled to suit project needs.
- Applied to manholes, lift stations, water treatment facilities, and tanks.



# Manhole Releveling and Grouting

## Manhole Releveling

- We adjust manhole elevations to match the surrounding pavement or terrain.
- We employ precision equipment to achieve millimeter-level accuracy for proper alignment.
- Address any pavement wear or subsidence to maintain seamless road functionality.
- Eliminates surface depressions and protrusions that could compromise vehicle safety or pavement longevity.
- Reduces stress on the manhole structure caused by improper load distribution.



Proudly Serving



## Grouting

- We apply hydrophilic or hydrophobic grout to seal cracks, leaks, and joints within and around manholes and associated system infrastructures.
- Our expert crews utilize injection techniques for precise placement and distribution of grout in targeted areas.
- Perform void filling around the manhole structure to restore foundational support.
- Prevents inflow and infiltration (I&I) to reduce system stress and treatment costs.
- Extends the life of the manhole structure by enhancing its structural integrity.
- Protects groundwater from contamination and prevents soil erosion.

Proudly Serving





# Trenchless: Cured-in-Place-Pipe Lining (CIPP/UV Cured)

CIPP is a trenchless solution for repairing pipelines with minimal disruption and maximum durability.

**Lateral CIPP Lining** - Rehabilitate city / municipal-owned laterals from cleanout down to main or from main into lateral with CIPP lining and Main to Lateral Connection liners (T Liners).

- Cleanout installation post-CIPP installation and the **entire city-owned lateral system is sealed and rehabilitated**
  - All material is triple-layer woven fiberglass material which is **4X structurally stronger** than traditional felt liner.
  - Liners are capable of multiple bends and turns in pipes.
  - Liners can also transition from **4" to 6" with ease**.
  - Liners are cured with **UV light** to drastically reduce failures during installs.
  - Meets or exceeds all ASTM 1216 Standards and Specs.

**T Liners / Connection Liners** - Rehabilitate main to lateral **connections 8"-12" mains to 4"-6" laterals** with Wye or Tee connections.

- Triple-layer woven fiberglass materials ensure tapered edges in the main and laterals to prevent flow from being interrupted.
  - Hydrophilic O Rings and Top Hat connection to prevent Infiltration into the collection system
  - **UV-cured CIPP Connection Liners** promote efficiency during the curing process – **No thermosetting resins**.
  - Meets or exceeds all **ASTM 2561, 1216, and 3240 Standards** and Specs.

## Proudly Serving





# Trenchless: Fold & Form, Slip Lining, and Spin Cast

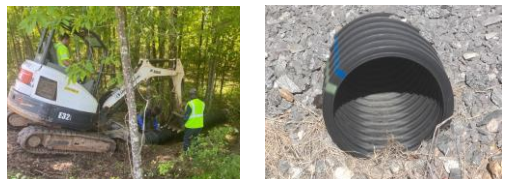
Trenchless solutions for repairing pipelines with **minimal disruption** and **maximum durability**.

## Fold & Form: Thermoplastic liners



- Suitable for a wide range of pipe sizes (**8"–36"**)
- Provides long-lasting durability with a **50-year design life**
- PVC material is initially soft (kept soft with heat using a boiler)
- The continuous pipe is pulled into existing pipe and then hardened by applying heat to revert to its **original size** for a tight fitting to existing pipe

## Slip Lining: Utilizing High Density Polyethylene (HDPE) or Polyvinyl Chloride (PVC) Pipe



- HDPE** pipe is pulled into existing pipe utilizing an excavator.
- Pipes are joined either by thermal-fusion (Welding), butt-fusion, or by a mechanical joint that meets the **requirements** of **ASTM D3212**
  - Annular space is grouted to complete the job



- PVC** pipe is pulled into existing pipe using the same method as the HDPE pipes
- PVC pipe liner is joined with PVC couplings that use **elastomeric sealing gaskets**
  - **All material** meet the performance requirements of **ASTM D3212**

## Proudly Serving



District 3



District 6



District 7

## Spin Cast: Centrifugal Cast Concrete



- **Utilizes centrifugal force** to apply structural engineered cementitious coatings to pipelines
- Ideal for **restoring pipe integrity** and **corrosion resistance**
- Efficient, cost-effective, and **minimizes downtime**
- The completed liner, once finished being applied, is smooth and **does not significantly reduce the original capacity**

# CCTV Cleaning and Inspection

All CCTV work conforms to current NASSCO Pipeline Assessment Certification Program (PACP) and/or Lateral Assessment Certification Program (LACP) standards, ensuring **the highest level of quality and consistency**.

- All pipe inspection are recorded and delivered entirely in electronic format, with direct cloud access preferred for **NASSCO-certified reports** and videos
- Capable of mainline or lateral cleaning with 1500 gallons of onboard water, (working at up **to 80gpm/2500 PSI**), and 15 cubic yard debris tank will meet and exceed nearly any infrastructure cleaning requirement
- Comprehensive Documentation providing PACP/LACP certified CCTV reports and logs, noting pipe defect coding encountered during inspection
- The speed of travel (30 fpm maximum) during the inspection is carefully controlled to ensure a thorough examination of each pipe joint, tee connection, structural deterioration, infiltration and inflow sources, and deposits, adhering to **NASSCO standards**
- The pipe is thoroughly cleaned to ensure visibility of all defects, features, and observations, facilitating comprehensive assessment and accurate logging
- Sanitary Sewer Evaluation Surveys (SSES), **Smoke & Dye Testing**, and Flow Monitoring
- **Ground Penetrating Radar** (GPR) Inspection & **GPS Locating**
- Can perform CCTV Inspection and Cleaning for **Storm, Sanitary, Lift Stations, Culverts, and Manholes**

## Proudly Serving



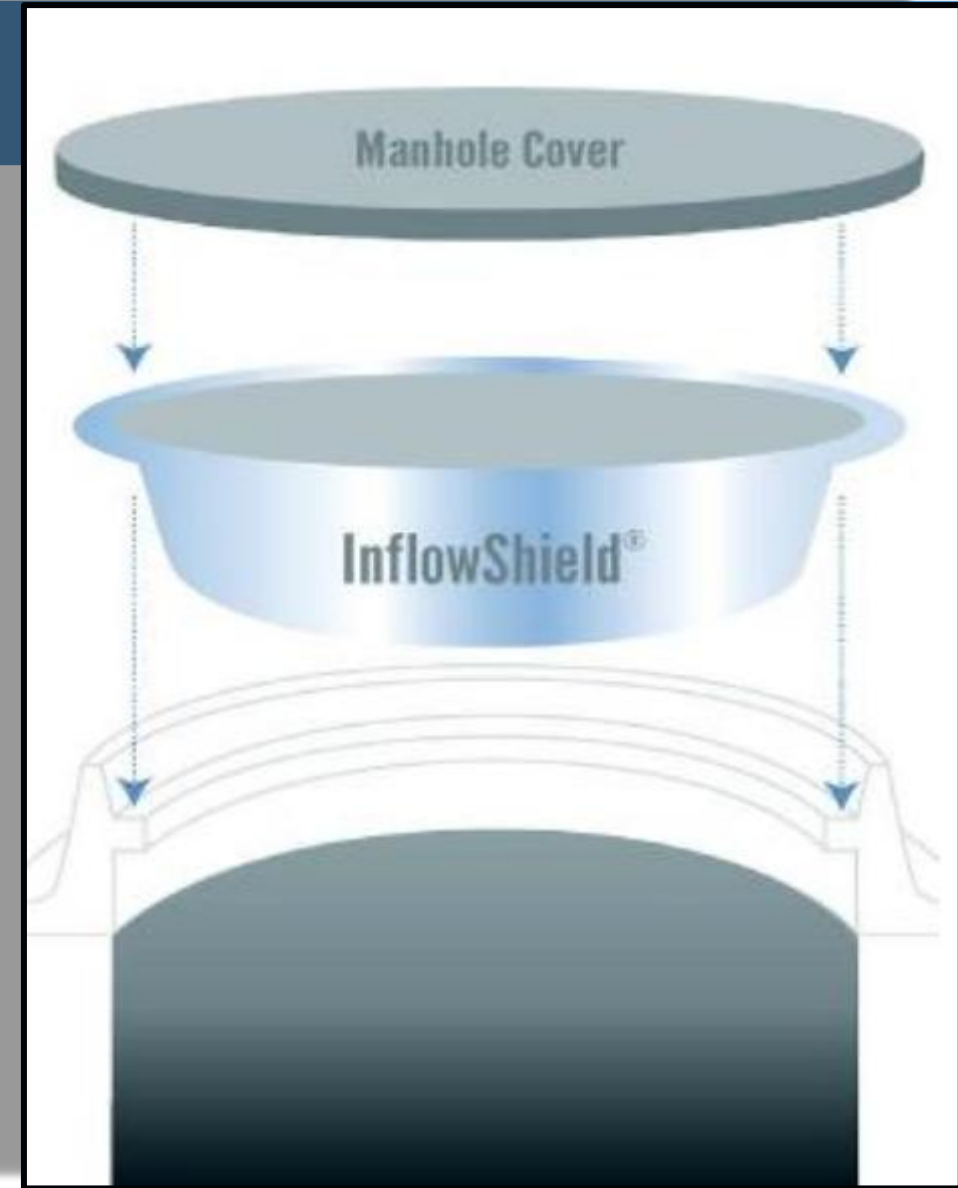
# InflowShield®

InflowShield® is a proprietary stainless-steel manhole insert that prevents costly stormwater inflow to sanitary sewer collection systems.

- InflowShield® manhole inserts are custom-sized and manufactured from 18-gauge **304 stainless steel** plus a machine extruded silicone rubber gasket on the bottom of the flange. This provides an **effective seal** to the manhole rim or flange.
- **Each insert** is equipped with a 3/16th inch plastic coated 304 stainless steel cable handle that is attached with stainless steel screws and locking nut.
- Offered in **(4) different sizes** to fit the most common manhole rings and covers. (22", 22.5", 23.5", and 25.5")
- **Load tested** more than **4000 PSI**



## Proudly Serving





# ACUS - Safety Practices & Highlights

ACUS prioritizes safety as a fundamental value, integrating rigorous standards and proactive measures to ensure exceptional outcomes.



## Safety Integration:

- Safety is woven into every aspect of ACUS operations, **treated as a core value** rather than a checklist
- Robust safety practices are critical to achieving job success and maintaining client trust

## Commitment to the Highest Standards:

- ACUS employees are rigorously trained during onboarding and continuously through their employment to ensure the highest level of safety
- Periodic inspections and checks are performed to ensure quality performance in-addition to compliance with all federal, state and local regulations
- Safety is prioritized on all job sites to ensure the well-being of workers, clients, and the public

## Positive Impact:

- ACUS safety protocols contribute directly to the quality and reliability of our project outcomes
- Our approach not only protects individuals but also safeguards the reputation of our clients and partners

## Proactive Culture:

- Safety is seen as a proactive measure, integrated into planning and execution phases
- Continuous improvement in safety practices ensures alignment with industry standards and client expectations
- Weekly safety topics, monthly safety focuses, and hands on training are utilized to foster continuing education outside of the classroom setting

## Reputation for Safety:

- ACUS highlights a strong safety record as a testament to their commitment to excellence
- Their dedication to safety reinforces their role as a trusted partner in the industry



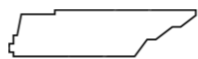
# Clients We Proudly Serve



## Georgia



## Florida



## Tennessee



# ACUS Office Locations

## Florida



**Corporate HQ Office:**

[8250 Bryan Dairy Rd. STE 100](#)  
[Largo, FL 33777](#)  
(727) 545-3815  
[www.acus-us.com](#)  
[Inquiries@acus-us.com](mailto:Inquiries@acus-us.com)



**Lakeland Office:**

[1306 Banana Road](#)  
[Lakeland, FL 33810](#)  
(863) 577-4821

[www.engineeredspraysolutions.net](#)

**Starke Office:**

[13953 US Highway 301 S.](#)  
[Starke, FL 32091](#)  
(863) 577-4821

[www.engineeredspraysolutions.net](#)



**Pinellas Park Office:**

[6855 102nd Ave N,](#)  
[Pinellas Park, FL 33782](#)  
(727) 545-3815  
[www.Rowland-Inc.com](#)  
[postmaster@rowland-inc.com](mailto:postmaster@rowland-inc.com)

## Georgia



**Stone Mountain Office:**

[1669 Litton Drive](#)  
[Stone Mountain, GA 30083](#)  
(470) 545-6541  
[www.mmelab.com](#)  
[info@mmelab.com](mailto:info@mmelab.com)



**Kenwood Office:**

[101 Kenwood Road, Suite 16-17](#)  
[Fayetteville, GA 30214](#)  
(770) 296-7548

[www.engineeredspraysolutions.net](#)

## Tennessee



**Sparta Office:**

[3260 East Gooseneck Road](#)  
[Sparta TN 38583](#)  
(931) 305-9551  
[www.engineeredspraysolutions.net](#)



# Thank you

When you choose AllClear, you're choosing the best of MME, ESS, and Rowland. Our one stop inflow & infiltration shop means our clients receive more solutions to expand their projects and increase efficiency. AllClear stands out from the rest by using advanced technologies to ensure the highest quality service that's built to last. No matter what your I & I goals are, we're here with our team of experts ready to bring your vision to life.

